

# **King Edward VI** **Grammar School**

## **Pupil Premium** **Statement**

Reviewed By: Mrs Laura Reeve  
Deputy Head Pastoral and Inclusion

## **Statement of intent**

At King Edward VI Grammar School we believe the highest possible standards can only be achieved by having the highest expectations of all learners. We aim to provide a holistic, academic education where all individuals achieve excellence and can develop and nurture their talents.

All schools receive additional funding known as the Pupil Premium Grant (PPG) from the government to help with two policies:

- Raising and improving the attainment of disadvantaged pupils of all abilities to reach their potential.
- Supporting children and young people with parents in the regular armed forces, as they can face extra challenges in reaching their potential and may often not perform as well as their peers. This is known as the Service Pupil Premium.

(DfE, 2019)

King Edward VI Grammar School will use the Pupil Premium Grant (PPG) to ensure students within these groups are supported to narrow any achievement gaps between them and their peers, including supporting any pastoral needs that might be affecting academic achievement. We also wish to raise future aspirations of these students.

## **How is a student eligible for the Pupil Premium Grant?**

Schools get pupil premium funding based on the number of pupils they have in January each year from the following groups:

- for every student who claims free school meals, or who has claimed free school meals in the last 6 years.  
*N.B Families who receive certain benefits may be eligible for free school meals if they are in receipt of one of the following benefits:*
  - o *Universal Credit with an annual net earned income of no more than £7,400.*
  - o *Income Support*
  - o *Income-based Jobseeker's Allowance*
  - o *Income-related Employment and Support Allowance*
  - o *Support under Part 6 of the Immigration and Asylum Act 1999*
  - o *The guarantee element of Pension Credit*
  - o *Working Tax Credit run-on (paid for the four weeks after you stop qualifying for Working Tax Credit)*
  - o *Child Tax Credit (with no Working Tax Credit) with an annual income of no more than £16,190*
- for every student who has left local authority care through adoption, a special guardianship order or child arrangements order  
*N.B for pupils who are currently Looked After, the school works with the Local Authority to help allocate the appropriate spending of their grant as this stays with the local authority.*
- for every student with a parent who is serving in HM Forces or has retired on a pension from the Ministry of Defence. This service premium is not part of the pupil premium as the rules to attract the service premium are different but it is paid to schools at the same time.

The [Pupil Premium Grant Information](#) and advice on checking eligibility is given to all parents/guardians of pupils when a place at King Edward VI Grammar School is accepted, as per the Admissions process. We also share this information again across the academic year, as parent situations may change.

If eligible, the student's name will appear on our Pupil Premium Grant download generated from the January Census and available annually in June/July. A Free Schools Meal download is also carried out monthly (although during the COvid-19 pandemic, this is weekly). This information is then updated onto SIMS for school staff use.

## Use of the Pupil Premium Grant

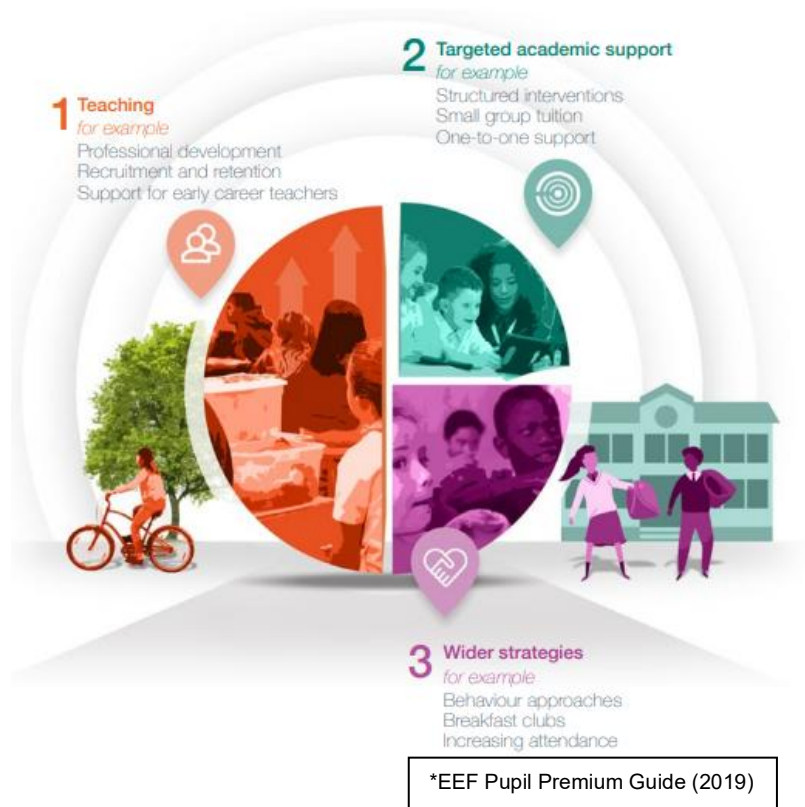
The Department for Education (DfE) states individual schools are to decide how to spend the pupil premium as they are "best-placed to assess their pupils' needs". Therefore, we do not allocate personal budgets per pupil in receipt of pupil premium.

Instead, as an inclusive school, it is our aim to ensure that any other students who may be underachieving but not eligible for pupil premium funding are able to benefit from the plans to improve progress, attainment, resilience and build confidence.

We identify barriers to learning and implement various short, medium and long term interventions aimed at reducing those barriers across a range of support levels i.e. individual, small groups, year groups and/or the whole school. We have adopted a '3 Year Pupil Premium Strategy' to enable us to align these interventions with our whole school improvement strategy. Around 95% of our total Pupil Premium Grant is allocated for spending at a whole school level which is outlined in this strategy. This way all our pupils can reach their full potential, develop high aspirations and nurture their talents.

We allocate our budget across a tiered approach in 3 key areas; Teaching and Learning, Academic Support and Wider Approaches, so that all students are able to benefit from:

- High quality teaching and learning that effectively promotes motivation, high aspiration and accelerated learning for all.
- A broad, rich and personalised curriculum that develops personal and social skills, confidence in learning and builds students cultural capital,
- Interventions to close the gap in achievement and address barriers to learning and progress.
- Exceptional pastoral care with bespoke, personalised provision for students who need additional support,
- Integration and supported involvement in activities with their peers.
- Access to funding for those suffering hardship to fund essentials which create a barrier to learning.



As legally required, the Pupil Premium Strategy, including spending and impact is published on the school website. This statement and the strategy incorporates the Service Pupil Premium Grant too and is reviewed annually by Deputy Head Inclusion and Intervention.

## **Supporting Pupil Premium Students**

Pupil Premium Students at KEVIGS are supported in the following ways:

- PASTORAL Support = Each Head of Year holds individual conversations with every eligible student in their year group after each Progress Review is published, as part of our universal Graduated Approach; Plan, Do, Review. They will discuss the progress review, set and review targets and decide with the individual student if any further support/interventions are needed. These conversations are logged on their year group Pupil Premium Record Document. *N.B for those students who are eligible for Service Pupil Premium (SPP), emphasis will be placed on Pastoral support and interventions such as Head of Year Mentoring, Emotional Literacy Support or Counselling as per DfE guidance.*
- ACADEMIC Support = Every department has its own intervention process outlined in their Department Plan and pupil premium students are supported like all students if they are under performing or would benefit from additional support/guidance via peer mentors, dept. workshops, extra tuition. The need to support is decided by subject teachers and Head of Departments.  
The Head of Key Stage may refer a Pupil Premium student to an Academic Learning Mentor for more general academic/study skills support if an individual's potential is not being met across a range of academic subjects.

Parents are welcome to discuss the progress of their child at the annual Parents Consultation Evenings or by raising any concerns they might have via their child's tutor.

It is expected that Heads of Key Stage and Heads of Department who wish to provide support to eligible Pupil Premium students via the 'General PP Fund', will complete the PP Request Form and send to the Whole School PP Champion for authorisation of spend. In addition, any staff member who runs curricular activities/trips/visits can put forward a request for funding to the PP Champion also.

### **Parental Requests for Support:**

It is important to reiterate that funds are not available on an individualised budget and the majority of the Pupil Premium Grant (c.95%) is already allocated for spending. However, we endeavour to support parents and students directly where possible with small contributions towards things which appear as a barrier to learning. Therefore, those who are directly eligible for Pupil Premium are able to apply for more specified support via the KEVIGS Pupil Premium General Fund.

Parents can apply using our online form: [KEVIGS Pupil Premium Parent Request 2026-2027 – Fill in form](#)

Applications can be submitted throughout the year and will be assessed individually. Please note the financial payments are not made directly to individuals/families, but via direct payments to the necessary companies/businesses or in the form of vouchers. It should also be noted that the Pupil Premium Grant differs on a yearly basis and we cannot guarantee that funding will be available or to the same level in future years.

Any unspent funds at the end of the academic year will be used in the following year solely for the KEVIGS General Pupil Premium Fund.

## **Monitoring the Pupil Premium Process**

The Senior Leadership Team monitor Pupil Premium by:

- a designated member of SLT is the Pupil Premium Champion for the school. They are tasked with producing and overseeing the 3 Year Strategy as well as the overall monitoring of the 'General PP Fund'. Feedback to SLT and the Governing Body will occur on a regular basis.
- Use of SISRA to monitor progress and attainment from Progress Reviews and Mock Exams.
- Regular discussions with Heads of Key Stage and Heads of Department re Pupil Premium students, sharing examples of good practice and reviewing ongoing processes.
- Director of Student Intervention analysis of each cohort's termly Progress Review data.
- Quality Assurance of Pupil Premium processes for their implementation and impact.